

## Model 62T Swing Check Valve

Check up to five results to perform an action.

Complies with MSS-SP-80-97

200WSP at 406° Max

400 WOG

100% Pressure Tested

Threaded Ends

PTFE Disc

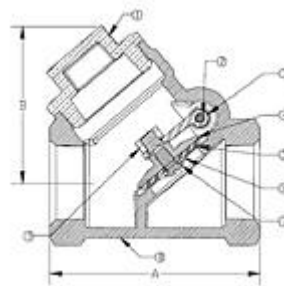
CRN OCO7135.2C

\*Contains lead. Not for use in water systems intended for human consumption\*

Install in horizontal position with cap in upright position.  
Not recommended for pulsating or vibrating service.



[larger image](#)



[larger image](#)

[Request Information](#)

[Compare Items](#)

Results per Page :

Results 1 - 9 of 9

1

<input type="checkbox"/>	Item #	Size	A - Total Length	B - Height	Ship Weight	Quantity per Carton
<input type="checkbox"/>	<a href="#">Model 62T - 1/4"</a>	1/4 in	3.38 in	1.51 in	0.75 lb	12
<input type="checkbox"/>	<a href="#">Model 62T - 3/8"</a>	3/8 in	2.53 in	1.53 in	0.81 lb	12
<input type="checkbox"/>	<a href="#">Model 62T - 1/2"</a>	1/2 in	2.66 in	1.53 in	0.76 lb	12
<input type="checkbox"/>	<a href="#">Model 62T - 3/4"</a>	3/4 in	3.09 in	1.88 in	1.19 lb	12
<input type="checkbox"/>	<a href="#">Model 62T - 1"</a>	1 in	3.53 in	2.09 in	1.73 lb	6
<input type="checkbox"/>	<a href="#">Model 62T - 1 1/4"</a>	1-1/4 in	5.13 in	3.63 in	5.75 lb	2

<input type="checkbox"/>	<u>Model 62T - 1 1/2"</u>	1 1/2 in	5.13 in	3.63 in	5.75 lb	2
<input type="checkbox"/>	<u>Model 62T - 2"</u>	2 in	5.56 in	4.56 in	10.00 lb	1
<input type="checkbox"/>	<u>Model 62T - 3"</u>	3 in	9.13 in	5.58 in	29.00 lb	1

UNITED BRASS

## Model 50T Lift Check Valve

Check up to five results to perform an action.

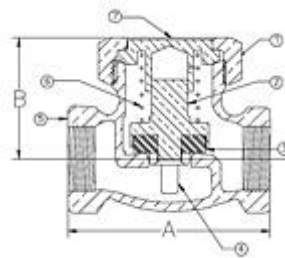
Spring Loaded Lift Check  
Complies with MSS-SP-80-97

200WSP at 406° Max  
400 WOG  
100% Pressure Tested  
Threaded Ends  
PTFE Disc  
Integral Seat  
CRN OCO7135.2C  
\*Contains lead. Not for use in water systems intended for human consumption\*

Equipped with 50TG PTFE disc for general service, including steam.



[larger image](#)



[larger image](#)

[Request Information](#)

[Compare Items](#)

Results per Page :

25

Results 1 - 8 of 8

1

	Item #	Size	A - Total Length	B - Height	Ship Weight	Quantity per Carton
<input type="checkbox"/>	<a href="#">Model 50T - 1/4"</a>	1/4 in	2.19 in	1.19 in	0.56 lb	12
<input type="checkbox"/>	<a href="#">Model 50T - 3/8"</a>	3/8 in	2.36 in	1.50 in	0.75 lb	12
<input type="checkbox"/>	<a href="#">Model 50T - 1/2"</a>	1/2 in	2.59 in	1.88 in	1.03 lb	12
<input type="checkbox"/>	<a href="#">Model 50T - 3/4"</a>	3/4 in	3.17 in	1.81 in	1.61 lb	6

<input type="checkbox"/>	<u>Model 50T - 1"</u>	1 in	3.75 in	2.06 in	2.44 lb	6
<input type="checkbox"/>	<u>Model 50T - 1 1/4"</u>	1-1/4 in	4.28 in	2.38 in	3.84 lb	2
<input type="checkbox"/>	<u>Model 50T - 1 1/2"</u>	1 1/2 in	4.78 in	2.63 in	5.20 lb	2
<input type="checkbox"/>	<u>Model 50T - 2"</u>	2 in	5.88 in	3.25 in	9.00 lb	1

UNITED BRASS